

# M-Bus Modem

*M-Bus readout by telephone network*

*Works with every M-Bus master*

*Transmission speed max. 2400 Baud*

*Real 11-Bit transmission*

*Operating mode shown by LED*

*Rail mounting possible*



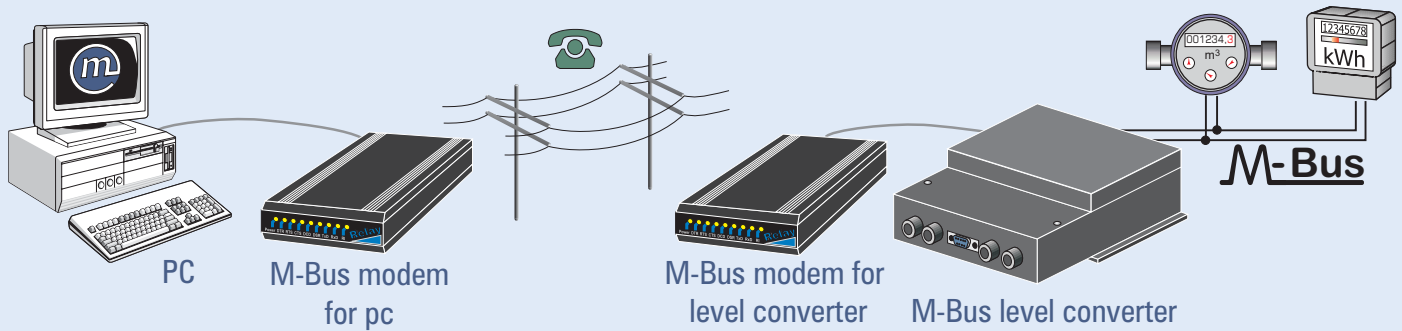
**M-Bus reading by the line - possible with the M-Bus Modem !  
All M-Bus masters with serial RS232 port can easily be connected to the analog telephone network by the M-Bus Modem. M-Bus data are transmitted from the level converter modem to the remote station modem without loss of data security in accordance to the EN1434-3 standard .  
This system allows the user to record and account consumption data minute-exactly from any location.  
In order to make installation and service as simple as possible the modems for PC and level converter are delivered pre-configured.**

**Relay**

**PadMess**

# M-Bus unlimited:

# M-Bus Modem



## Function of the M-Bus modems

The M-Bus modems are analog telephone modems that enable long-distance data transmission between every M-Bus level converter and a remote computer. Meter data can directly be accessed without a CPU on-site. The real transmission of the parity bit and the guaranteed M-Bus timing ensure the high data security required by the M-Bus standard EN1434-3. In combination with an A/B adapter the M-Bus Modem can easily be connected to an ISDN system.

## Advantages of the M-Bus system

- ✓ Cost-saving field bus system
- ✓ Two-wire bus supplying power to the bus users
- ✓ Large range (several kilometres)
- ✓ European standard (EN1434)
- ✓ Good availability of system components
- ✓ Suited for applications at home and in industry
- ✓ Remote reading of consumption (water, heat, gas, electricity, ...)
- ✓ Total energy monitoring
- ✓ Data logging by mouse click

## Technical data

Operating voltage:	10 .. 36V DC or 8 .. 24V AC
Power input:	max. 3W
Temperature range:	0 .. 55 °C
DTE-baudrate:	300 .. 2400 baud (online switchable)
Data type:	free selectable, paritybit is transmitted
Timing:	according to standards IEC870-5-1/2 and EN1434-3 EN13757-2

Housing:	black aluminium housing protection type IP20 H x W x D: 130 x 130 x 32 mm
Level converter modem:	rail mounted
PC modem:	desktop device
Display:	8 LEDs for mode and interface signals
Ports:	power socket coax. 2,5mm D-SUB 9-pin socket for RS232 telephone connection RJ12C
Approval:	CE

## Order information

M-Bus Modem for PC	Art.-No. MOD002
M-Bus Modem for level converter	Art.-No. MOD003
<u>Delivery contains:</u>	
230V plug-in power supply 9V AC exit telephone cable RJ12C and adapter to TAE-N	
MOD002:	disc for Windows95/98/NT/XP 9-pin serial cable

## Accessories

<u>M-Bus readout software:</u>	
M-Bus OLE Server for Windows95/98/NT/XP	Best.Nr. SW005M
DOKOMCS (master and level converter)	Best.Nr. DOKOMCS
MB-Sheet (level converter)	Best.Nr. MBSHEET

**Relay**

Reinecke Elektronikentwicklung und Layout GmbH  
Stettiner Str. 38  
D-33106 Paderborn  
www.relay.de

Tel.: 05251 / 1767-0  
Fax.: 05251 / 1767-20  
E-Mail: info@relay.de

**PadMess**

Meß- und Kommunikationstechnik GmbH  
Stettiner Str. 38  
D-33106 Paderborn  
www.padmess.de

Tel.: 05251 / 1769-0  
Fax.: 05251 / 1769-20  
E-Mail: info@padmess.de